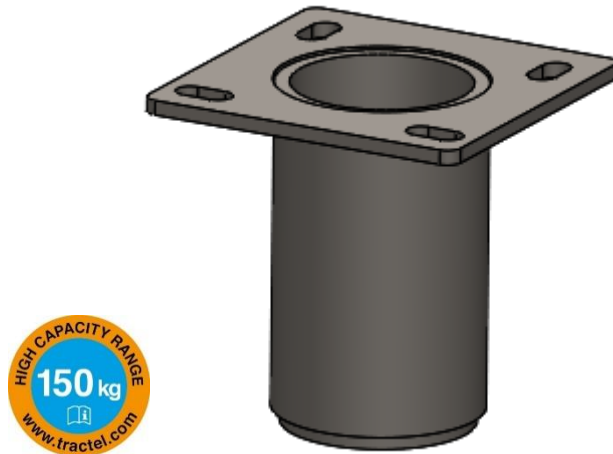


## APPLICATIONS

The davitrac or davimast flush floor adapter is exclusively intended to be installed with the davitrac or davimast manufactured by Tractel®. This adapter allows the davitrac or davimast to be installed on the floor on a horizontal surface.



## DESCRIPTION

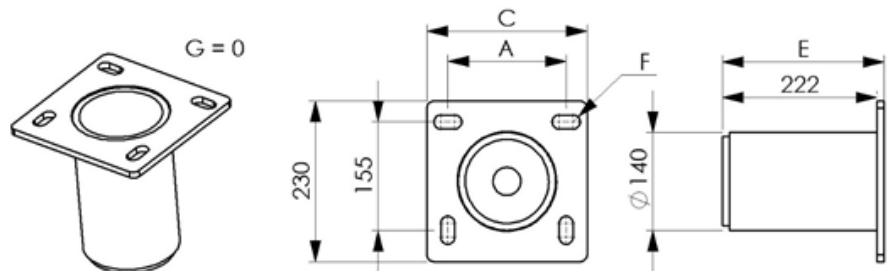
The davitrac / davimast flush floor adapter is fixed to the floor with 4 heavy duty chemical anchors with a diameter of 16mm after doing a 145mm hole in the floor.

It can be installed without any specific tools and is quick and easy to install.

It allows the davitrac or davimast to rotate 360° in relation to its axis.

## TECHNICAL CHARACTERISTICS

- Material: galvanised steel
- Net weight: 10.7kg
- A: 170mm
- B: 155mm
- C: 230mm
- D: 230mm
- E: 232mm
- F: 20mm



## APPLICABLE STANDARDS

- EN795-A:2012: Fall arrest anchor point,
- TS16415: Multiuser of 150 kg
- 2006/42/CE: Anchor lifting point in accordance with the machine directive (WLL 500kg)

## MAIN COMPONENTS

Code	Description	EAN Code	Weight (incl. packaging)	Packaging size
210138	Flush floor adapter davimast / davitrac	3600232101383	10.7 kg	230x230x232 mm